

2 MW glass-melting furnace

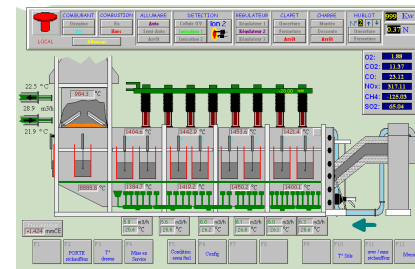


Characteristics :

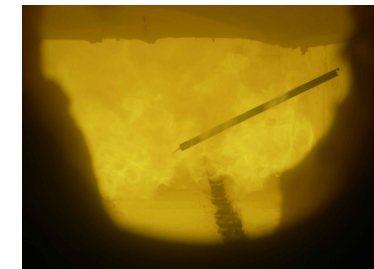
- Maximum temperature : 1550 °C
- Maximum Thermal Input : 2 MW
- Size : Width : 1,4 m - Height : 1,5 m - Length : 5,5 m
- Cooling system : water-cooled load on the hearth
- Access : 9 accesses on the left side and one on the back
- Type of fuel : Natural Gas, fuel-oil, coal, H₂, syngas
- Type of oxidant : Air, preheated air (up to 1100 °C), O₂

Main profit :

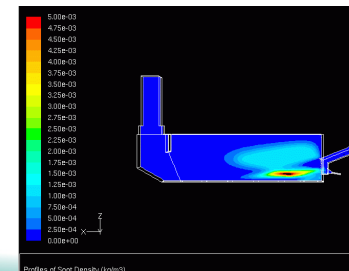
- Preheating air device up to 1100°C for 2000 Nm³/h
- Complementarity with numerical simulation
- In-flame measurements with suction pyrometer probe
- Supervision computer for heat balance calculation (live)
- Approved by the biggest international glass-melters



Constant monitoring with dedicated control panel



In-flame measurements with suction pyrometer



Numerical simulation to identify hot point and recirculation zone